

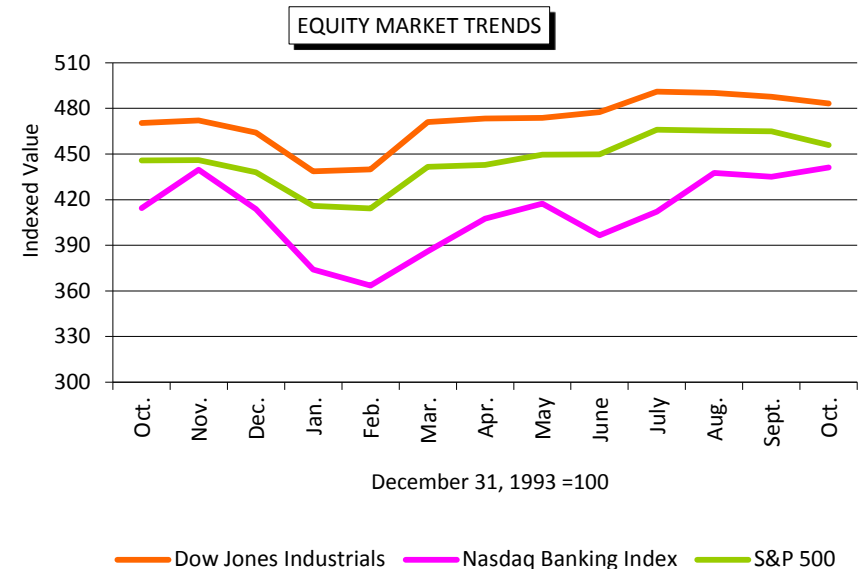
The Bank and Thrift ADVISOR®

October 31, 2016



Northeast Banking Profile A Summary of Trading Market Trends

Closing prices as of October 31, 2016	AVERAGES FOR BANKS					AVERAGES FOR THRIFTS			
	<\$1B OTC	\$1-\$3B OTC	<\$1B	\$1-\$3B	\$3-\$30B	<\$1B OTC	<\$1B	\$1-\$3B	\$3-\$30B
Price to LTM EPS (X)	16.4	11.2	13.8	19.4	16.9	25.5	29.3	24.7	23.2
Price to BV (%)	94.0	114.9	117.4	130.3	137.7	95.6	115.5	124.4	125.5
Price to TBV (%)	97.2	120.6	124.4	142.0	186.2	96.9	119.4	133.3	145.2
Price Change MTD (%)	1.2	1.3	0.0	0.4	2.2	2.1	1.8	2.4	2.0
Price Change YTD (%)	3.8	0.3	10.5	12.3	9.6	16.8	7.9	9.4	6.9
Dividend Yield (%)	2.1	2.8	2.0	2.5	2.5	0.9	0.9	1.3	2.7
Dividend Payout (%)	37.6	34.0	26.5	41.2	42.0	12.3	26.4	40.8	55.7

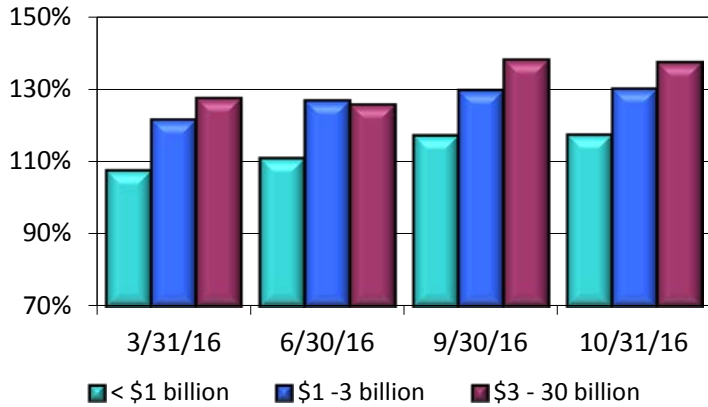


The material presented herein was prepared from sources believed reliable; however, no representation is made as to its accuracy or completeness. This report is published for information purposes only and is not to be construed as an offer or solicitation with respect to the sale or purchase of any securities. Financial data is as of the most recent reporting period. Pending acquisitions are in italics and are not included in averages. SBLF participants are in green. © 2016 Ostrowski & Company, Inc. All Rights Reserved.

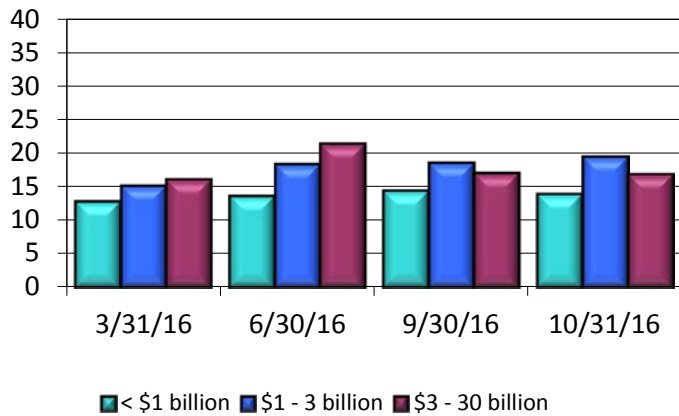
NORTHEAST TRADING MARKET TRENDS

BANKS

AVERAGE PRICE % BOOK VALUE

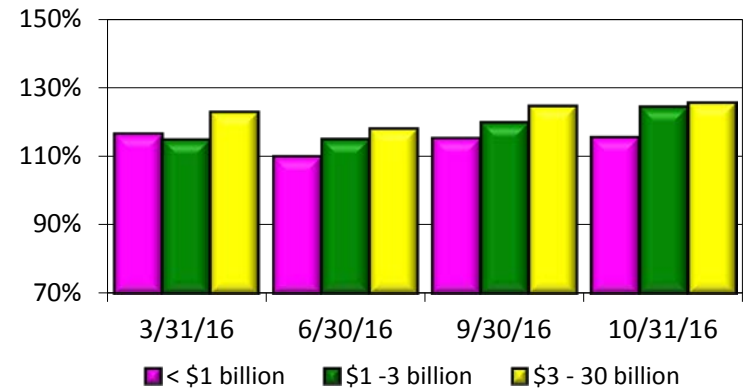


AVERAGE PRICE TIMES EARNINGS

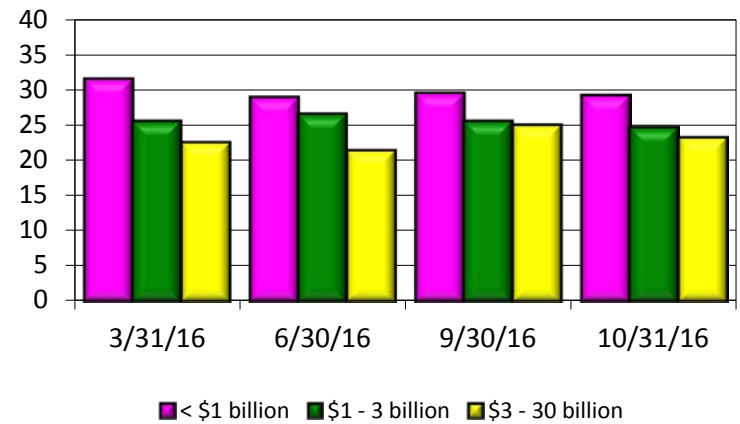


THRIFTS

AVERAGE PRICE % BOOK VALUE



AVERAGE PRICE TIMES EARNINGS



ST	10/31/16 Price (\$)	52 Week Trading Range		Price Change		Pr./ LTM			LTM EPS (\$)	BV (\$)	TBV (\$)	LTM Div.			TA (\$M)	NIM (%)	ROAA (%)	ROAE (%)	Tang.		
		High (\$)	Low (\$)	MTD (%)	YTD (%)	EPS (x)	Pr./ BV (%)	Pr./ TBV (%)				Div. Yld. (%)	Div. P/O (%)	Eq./ TA (%)					CEq./ Tang.A (%)		
Northeast Banks < \$1 Billion																					
Bancorp of New Jersey, Inc.	NJ	11.20	13.50	9.75	-1.50	0.63	14.7	93.1	93.1	0.76	12.04	12.04	0.06	2.06	31.58	821	3.01	0.59	6.43	9.18	9.18
CB Financial Services, Inc.	PA	22.50	24.00	19.00	-3.85	-1.83	12.6	101.9	113.1	1.79	22.07	19.89	0.22	3.76	49.16	834	3.79	0.88	8.26	10.81	9.84
DNB Financial Corporation	PA	25.08	30.00	23.05	-1.12	-15.00	17.8	120.8	120.9	1.41	20.76	20.74	0.07	1.10	19.86	770	3.11	0.54	6.89	7.69	7.68
Enclaire Financial Corp	PA	25.75	26.09	22.60	4.58	7.28	15.0	100.1	125.9	1.72	25.73	NA	0.26	4.22	59.30	694	3.27	0.58	6.88	7.96	NA
Marlin Business Services Corp.	NJ	17.50	19.92	13.46	-9.70	8.97	14.1	138.6	138.6	1.24	12.63	12.63	0.14	2.89	45.16	869	NA	1.91	10.11	18.26	18.26
Northeast Bancorp	ME	11.20	11.78	9.56	-3.28	6.67	14.2	88.7	90.0	0.79	12.63	12.45	0.01	0.35	5.06	986	4.48	0.81	6.54	11.32	11.17
Parke Bancorp, Inc.	NJ	15.60	16.68	9.88	3.44	37.50	7.6	104.5	104.5	2.05	NA	NA	0.08	2.12	14.42	955	4.02	2.10	NA	NA	11.02
Patriot National Bancorp, Inc.	CT	13.00	16.79	12.57	-2.11	-10.65	21.0	81.5	81.5	0.62	15.94	15.94	0.00	0.00	0.00	653	3.70	0.39	3.93	9.66	9.66
Royal Bancshares of Pennsylvania, Inc.	PA	2.60	3.31	1.85	10.10	24.32	6.8	136.8	136.8	0.38	1.90	1.90	0.00	0.00	0.00	811	3.43	1.64	18.32	8.60	7.04
Salisbury Bancorp, Inc.	CT	31.20	34.90	28.77	0.91	-6.80	11.8	92.0	108.8	2.64	33.92	28.69	0.28	3.62	42.42	928	3.75	0.81	7.84	10.08	8.66
Stewardship Financial Corporation	NJ	8.00	8.77	5.51	1.46	32.67	11.4	96.5	96.5	0.70	8.29	8.29	0.03	1.86	12.86	743	3.23	0.61	8.74	6.83	6.83
Sussex Bancorp	NJ	16.65	17.40	11.43	1.96	27.20	15.7	134.7	141.5	1.06	12.37	11.77	0.04	0.98	15.09	809	3.38	0.67	8.78	7.25	6.92
Two River Bancorp	NJ	11.78	11.95	8.75	2.26	18.39	12.3	95.1	116.5	0.96	12.39	10.11	0.04	1.39	15.10	909	3.59	0.89	8.18	10.84	9.03
Union Bankshares, Inc.	VT	33.00	37.55	26.50	-3.11	18.23	18.1	259.0	273.6	1.82	12.74	12.06	0.28	3.29	60.44	673	NA	1.26	14.73	8.44	8.03
Northeast Banks < \$1 Billion Average					0.00	10.54	13.8	117.4	124.4	1.28	15.65	13.88	0.11	1.97	26.46	818	3.56	0.98	8.90	9.76	9.49
Northeast Thrifts < \$1 Billion																					
Carver Bancorp, Inc.	NY	4.50	7.48	1.92	-12.11	20.00	NM	168.6	168.6	-0.16	2.67	2.67	0.00	0.00	NM	698	3.20	-0.05	-0.64	7.88	1.41
Coastway Bancorp, Inc.	RI	13.15	14.01	11.03	-4.01	0.54	22.7	86.3	86.3	0.58	15.23	15.23	0.00	0.00	0.00	600	3.38	0.46	3.60	11.34	11.34
Elmira Savings Bank	NY	21.10	21.50	16.83	6.00	6.13	16.7	125.6	171.7	1.26	16.80	12.29	0.23	4.62	73.02	567	3.20	0.77	7.81	9.83	6.07
FSB Bancorp, Inc.	NY	13.00	13.70	9.19	3.18	25.77	44.0	113.4	113.4	0.30	NA	NA	0.00	0.00	0.00	260	2.86	0.22	2.48	12.11	12.11
Georgetown Bancorp, Inc.	MA	25.55	26.00	18.25	22.37	35.04	59.4	145.0	145.0	0.43	17.62	17.62	0.05	0.96	45.35	315	3.58	0.25	2.37	10.30	10.30
Greene County Bancorp, Inc. (MHC)	NY	17.20	21.30	14.00	3.18	7.67	15.6	191.0	191.0	1.10	9.00	9.00	0.10	2.28	33.86	893	3.60	1.12	12.83	8.56	8.56
Lake Shore Bancorp, Inc. (MHC)	NY	14.31	15.10	12.97	5.77	6.79	20.2	112.7	112.7	0.71	NA	NA	0.07	2.07	39.44	478	3.44	0.88	5.57	16.16	16.16
Magyar Bancorp, Inc. (MHC)	NJ	10.43	11.00	9.51	3.35	4.18	57.9	127.8	127.8	0.18	8.16	8.16	0.00	0.00	0.00	568	3.27	0.19	2.27	8.36	8.36
Malvern Bancorp, Inc.	PA	17.75	17.75	15.00	8.23	1.08	9.5	123.1	123.1	1.86	14.42	14.42	0.00	0.00	0.00	821	2.63	1.59	14.05	11.52	11.52
Melrose Bancorp, Inc.	MA	15.50	15.85	14.00	3.96	1.44	47.0	94.1	94.1	0.33	16.48	16.48	0.00	0.00	0.00	257	3.00	0.36	1.83	16.82	16.82
MSB Financial Corp.	NJ	13.40	13.95	11.52	-0.81	7.20	NM	105.8	105.8	0.11	12.66	12.66	0.00	0.00	0.00	396	3.04	0.17	0.89	19.04	19.04
Pathfinder Bancorp, Inc.	NY	12.17	13.32	10.76	0.05	-5.71	16.7	90.4	98.3	0.73	13.46	12.37	0.10	1.64	27.40	717	3.22	0.47	NA	NA	7.59
PB Bancorp, Inc.	CT	9.00	9.90	8.15	3.69	5.58	NM	83.4	90.7	0.12	10.80	9.92	0.03	1.19	97.66	503	2.30	0.18	1.36	16.93	15.77
Provident Bancorp, Inc. (MHC)	MA	16.05	16.35	12.12	2.88	23.56	NA	140.7	140.7	NA	11.41	11.41	0.00	0.00	NA	768	3.65	0.82	5.72	14.10	14.10
Prudential Bancorp, Inc.	PA	14.68	16.20	13.80	1.38	-3.42	66.7	104.5	104.5	0.22	14.05	14.05	0.03	0.85	54.55	556	2.73	0.34	1.50	20.33	20.33
Randolph Bancorp, Inc.	MA	13.90	13.95	12.06	1.98	NA	NA	NA	NA	NA	NA	NA	0.00	0.00	NA	490	NA	NA	NA	17.54	17.54
Wellesley Bancorp, Inc.	MA	23.95	24.72	18.05	9.21	26.05	18.0	106.3	106.3	1.33	22.52	22.52	0.04	0.73	10.53	666	3.21	0.50	5.82	8.31	8.31
WVS Financial Corp.	PA	12.25	12.90	10.73	-5.04	-0.41	16.6	74.5	74.5	0.74	16.44	16.44	0.04	1.24	32.43	335	NA	0.42	4.32	9.85	9.85
Northeast Thrifts < \$1 Billion Average					1.82	7.90	29.3	115.5	119.4	0.63	13.15	12.69	0.04	0.86	26.35	563	3.07	0.53	4.63	13.04	12.05
Northeast Banks \$1 - \$3 Billion																					
1st Constitution Bancorp	NJ	13.50	14.08	11.27	-1.78	10.14	12.5	103.7	118.5	1.08	13.02	11.39	0.05	1.46	4.63	1,055	3.92	0.90	8.99	9.85	8.73
ACNB Corporation	PA	26.90	27.83	20.50	1.20	26.29	14.6	135.0	143.4	1.84	19.92	18.75	0.20	3.01	43.48	1,209	3.40	0.96	9.52	9.99	9.46
AmeriServ Financial, Inc.	PA	3.30	3.40	2.90	-0.60	3.13	25.4	62.4	70.8	0.13	5.29	4.66	0.02	1.81	34.62	1,146	3.28	0.22	2.41	8.73	7.77
Arrow Financial Corporation	NY	31.60	34.08	23.83	-3.75	19.79	16.0	185.6	207.4	1.98	17.02	15.24	0.24	2.96	49.14	2,580	3.18	1.07	12.01	8.88	8.02
Bankwell Financial Group, Inc.	CT	24.66	25.05	18.48	4.09	24.23	16.0	132.7	135.7	1.54	18.59	18.18	0.05	0.84	12.99	1,566	3.56	0.83	8.55	8.98	8.80
Bar Harbor Bankshares	ME	36.35	37.69	29.53	-1.01	5.61	14.0	134.0	138.4	2.59	27.14	26.26	0.28	3.00	41.31	1,718	3.06	0.97	9.88	9.57	9.28
BCB Bancorp, Inc.	NJ	11.80	12.00	9.75	4.89	13.46	23.6	113.7	113.7	0.50	10.38	10.38	0.14	4.98	112.00	1,679	3.29	0.39	5.05	7.88	6.96
Chemung Financial Corporation	NY	28.50	32.95	26.05	-1.69	3.64	14.7	93.8	113.4	1.94	30.37	25.13	0.26	3.59	53.61	1,729	3.39	0.56	6.48	8.38	7.03
Citizens & Northern Corporation	PA	20.92	22.67	19.26	-4.78	-0.38	16.3	132.7	141.5	1.28	15.77	14.78	0.26	4.73	81.25	1,245	3.69	1.27	8.25	15.31	14.48
CNB Financial Corporation	PA	19.55	21.70	16.51	-7.61	8.43	13.5	131.2	163.4	1.45	14.90	11.97	0.17	3.12	45.52	2,540	NA	0.89	10.05	8.48	6.93
Codorus Valley Bancorp, Inc.	PA	20.90	21.24	18.57	0.30	7.89	14.0	112.8	114.5	1.50	18.53	18.25	0.12	2.38	32.73	1,523	3.84	0.83	8.10	10.20	10.06
Enterprise Bancorp, Inc.	MA	26.10	30.81	20.01	-6.79	14.22	15.2	138.3	142.0	1.72	18.87	18.38	0.13	1.86	29.94	2,471	3.91	0.80	9.65	8.74	8.53

ST	10/31/16 Price (\$)	52 Week Trading Range		Price Change		Pr./ LTM EPS	Pr./ BV	Pr./ TBV	LTM EPS	BV (\$)	TBV (\$)	Div. (\$)	Div. Yld. (%)	LTM	TA (\$M)	NIM (%)	ROAA (%)	ROAE (%)	Eq./ TA (%)	Tang.	
		High	Low	MTD	YTD									Div. P/O (%)						Tang. CEq./ Tang.A (%)	
		High	Low	(%)	(%)	(x)	(%)	(%)	(%)	(%)	(%)	(%)	(%)	(%)	(%)	(%)	(%)	(%)	(%)	(%)	(%)
Northeast Banks \$1 - \$3 Billion continued																					
Evans Bancorp, Inc.	NY	27.56	28.83	22.85	0.76	7.15	15.5	124.1	135.7	1.78	22.20	20.31	0.38	2.78	42.70	1,085	3.67	0.78	8.25	8.78	8.09
First Bancorp, Inc.	ME	23.67	24.66	17.37	-1.25	15.63	14.6	145.1	175.0	1.62	16.31	13.53	0.23	3.84	55.56	1,635	3.08	1.10	10.09	10.76	9.09
First Bank	NJ	8.90	9.50	6.25	6.21	34.64	17.1	115.9	116.3	0.52	7.68	7.66	0.00	0.00	0.00	1,008	3.10	0.58	7.12	8.68	8.66
Merchants Bancshares, Inc.	VT	43.00	43.65	27.00	32.76	36.55	20.9	187.0	197.2	2.06	22.99	21.80	0.28	3.46	54.37	1,995	3.02	0.72	9.41	7.94	7.55
Mid Penn Bancorp, Inc.	PA	18.50	19.51	14.65	-5.08	14.91	10.8	104.3	111.6	1.71	17.74	NA	0.12	2.46	33.92	1,043	3.86	0.76	10.11	7.20	NA
Norwood Financial Corp.	PA	29.04	30.10	26.25	-0.11	1.02	24.0	103.5	115.9	1.21	28.06	25.07	0.31	4.26	102.48	1,125	3.67	0.56	4.29	10.28	9.29
Orrstown Financial Services, Inc.	PA	20.90	23.73	16.51	5.82	17.15	27.5	124.0	122.8	0.76	16.86	NA	0.09	1.82	44.74	1,354	3.11	0.47	4.49	10.32	NA
Penns Woods Bancorp, Inc.	PA	42.50	45.65	34.76	-4.41	0.09	15.1	143.8	166.4	2.81	29.56	25.55	0.47	4.23	66.90	1,347	3.48	1.00	9.54	10.39	9.10
Peoples Financial Services Corp.	PA	39.84	41.81	32.74	-2.26	4.62	15.7	114.9	156.2	2.53	34.68	25.50	0.31	3.04	49.01	1,971	3.79	1.00	7.42	13.01	9.91
Republic First Bancorp, Inc.	PA	3.95	4.84	3.79	-3.89	-8.78	35.9	126.3	126.3	0.11	NA	NA	0.00	0.00	0.00	1,734	3.26	0.28	3.64	6.90	NA
Suffolk Bancorp	NY	36.00	36.40	22.88	3.54	26.98	21.7	199.7	200.4	1.66	18.03	17.96	0.10	1.15	24.10	2,196	3.81	0.91	9.64	9.77	9.74
Sun Bancorp, Inc.	NJ	23.00	23.25	19.52	-0.26	11.43	62.2	163.4	190.8	0.37	14.08	12.05	0.01	0.17	2.70	2,189	2.91	0.31	2.63	12.14	10.58
Unity Bancorp, Inc.	NJ	12.30	12.88	8.75	-4.06	8.50	9.2	130.2	132.5	1.34	9.45	9.29	0.05	1.42	11.55	1,153	3.58	1.15	15.50	7.65	7.52
Northeast Banks \$1 - \$3 Billion Average					0.41	12.25	19.4	130.3	142.0	1.44	18.64	16.91	0.17	2.49	41.17	1,612	3.45	0.77	8.04	9.55	8.89
Northeast Thrifts \$1 - \$3 Billion																					
Blue Hills Bancorp, Inc.	MA	15.55	16.58	13.22	3.53	1.57	55.5	107.6	110.7	0.28	14.45	14.05	0.03	0.80	35.71	2,314	2.73	0.33	1.78	16.84	16.45
BSB Bancorp, Inc.	MA	24.50	25.18	20.72	4.57	4.75	20.6	142.2	142.2	1.19	17.23	17.23	0.00	0.00	0.00	2,074	2.49	0.57	7.16	7.56	7.56
Clifton Bancorp Inc.	NJ	15.29	15.49	13.09	0.00	6.62	NM	116.5	116.5	0.19	13.13	13.13	0.06	1.59	126.32	1,286	2.39	0.40	1.45	24.07	24.07
ESSA Bancorp, Inc.	PA	13.48	14.22	12.69	-2.53	-1.46	18.5	87.1	96.0	0.73	15.48	14.05	0.09	2.60	49.32	1,772	2.89	0.45	4.40	9.95	9.11
First Connecticut Bancorp, Inc.	CT	17.75	18.40	14.42	-0.22	1.95	19.9	109.8	109.8	0.89	16.17	16.17	0.08	1.80	31.46	2,832	2.80	0.49	5.34	9.03	9.03
HarborOne Bancorp, Inc. (MHC)	MA	17.07	17.14	12.53	8.31	NA	NA	167.2	174.4	NA	10.21	9.79	0.00	0.00	NA	2,347	2.80	0.20	1.99	13.97	13.47
Hingham Institution for Savings	MA	143.45	144.95	115.05	3.57	19.74	13.8	198.3	198.3	10.41	72.35	72.35	0.32	0.92	14.60	1,960	3.10	1.21	15.48	7.86	7.86
Lake Sunapee Bank Group	NH	18.22	18.89	13.25	0.83	29.86	16.4	107.3	167.9	1.11	16.98	10.85	0.14	3.10	50.45	1,584	3.04	0.60	6.63	8.99	5.94
Ocean Shore Holding Co.	NJ	24.15	24.20	15.94	6.62	40.82	21.8	133.0	138.9	1.11	18.16	17.39	0.06	1.06	21.62	1,097	3.25	0.66	6.11	10.78	10.37
SI Financial Group, Inc.	CT	13.05	14.47	12.52	-1.14	-4.40	24.6	99.8	112.2	0.53	13.08	11.64	0.04	1.21	30.19	1,538	2.89	0.42	3.99	10.39	9.35
Western New England Bancorp, Inc.	MA	7.90	8.85	7.30	3.27	-5.95	31.6	99.7	99.7	0.25	7.92	7.92	0.03	1.57	48.00	1,378	2.61	0.33	3.11	10.54	10.54
Northeast Thrifts \$1 - \$3 Billion Average					2.44	9.35	24.7	124.4	133.3	1.67	19.56	18.60	0.08	1.33	40.77	1,835	2.82	0.51	5.22	11.82	11.25
Northeast Banks \$3 - \$30 Billion																					
Berkshire Hills Bancorp, Inc.	MA	29.55	30.69	24.71	6.64	1.51	14.1	98.6	157.4	2.09	29.97	18.77	0.20	2.89	37.80	7,931	3.31	0.82	7.24	11.76	7.71
Boston Private Financial Holdings, Inc.	MA	13.15	13.44	9.34	2.49	15.96	16.9	149.9	199.1	0.78	8.77	6.61	0.10	3.12	50.00	7,682	2.93	0.98	9.60	10.17	7.33
Bridge Bancorp, Inc.	NY	27.55	32.40	26.23	-3.64	-9.46	14.1	132.7	191.8	1.95	20.75	14.37	0.23	3.22	47.18	3,834	3.46	0.91	9.78	9.46	6.74
Brookline Bancorp, Inc.	MA	12.80	13.05	9.91	5.00	11.30	17.3	130.5	165.3	0.74	9.81	7.74	0.09	2.95	48.65	6,380	3.48	0.90	8.05	11.02	8.82
Bryn Mawr Bank Corporation	PA	31.40	32.50	23.92	-1.84	9.33	26.4	140.2	210.1	1.19	22.40	14.94	0.21	2.63	68.07	3,174	3.79	0.67	5.53	11.92	8.28
Camden National Corporation	ME	33.02	33.72	24.82	3.75	12.34	16.6	129.6	175.0	1.99	25.47	18.87	0.20	2.51	40.13	3,904	3.33	0.82	8.30	10.07	7.66
Century Bancorp, Inc.	MA	45.35	46.35	38.26	0.07	4.35	10.5	108.0	109.3	4.30	41.99	41.50	0.12	1.06	11.16	4,298	2.14	0.58	10.85	5.44	5.38
Community Bank System, Inc.	NY	47.11	48.85	34.27	-2.08	17.95	21.3	168.4	275.5	2.21	27.97	17.10	0.32	2.66	56.56	8,728	3.69	1.14	8.30	14.21	9.20
ConnectOne Bancorp, Inc.	NJ	18.35	19.69	14.86	1.61	-1.82	13.1	110.9	158.1	1.40	16.54	11.60	0.08	1.66	21.43	4,328	3.41	1.04	8.80	11.54	8.39
Customers Bancorp, Inc.	PA	27.07	31.63	21.66	7.59	-0.55	11.3	130.3	139.9	2.39	20.78	NA	0.00	0.00	0.00	9,603	2.84	0.87	12.17	8.23	NA
F.N.B. Corporation	PA	13.07	14.66	11.16	6.26	-2.02	17.2	111.5	200.3	0.76	11.72	6.53	0.12	3.90	63.16	21,584	3.39	0.81	6.67	11.91	6.69
Financial Institutions, Inc.	NY	26.85	29.53	24.56	-0.96	-4.11	13.6	126.3	167.4	1.97	21.26	16.04	0.20	2.95	40.61	3,687	3.22	0.86	9.56	8.85	6.45
First Commonwealth Financial Corporation	PA	10.16	10.36	7.85	0.69	12.02	17.5	120.3	154.2	0.58	8.45	6.59	0.07	2.78	48.28	6,666	3.28	0.78	7.03	11.28	9.02
First of Long Island Corporation	NY	31.95	33.53	26.14	-3.62	6.50	16.1	161.5	161.6	1.98	19.79	19.77	0.21	2.53	40.91	3,434	2.91	0.92	10.72	9.04	9.03
Flushing Financial Corporation	NY	21.42	23.78	18.95	-9.70	-1.02	10.0	119.6	123.5	2.15	17.90	17.34	0.17	2.87	31.16	5,999	2.97	1.07	12.80	8.54	8.30
Fulton Financial Corporation	PA	14.90	15.15	11.48	2.62	14.53	16.4	121.2	161.5	0.91	12.30	9.23	0.10	2.75	43.96	18,701	3.19	0.87	7.61	11.39	8.79
Independent Bank Corp.	MA	55.15	56.40	39.58	1.96	18.55	18.4	177.4	239.0	3.00	31.09	23.08	0.29	2.14	37.67	7,502	3.40	1.08	9.95	10.91	8.33
Lakeland Bancorp, Inc.	NJ	14.15	14.35	9.72	0.78	20.02	15.5	126.1	175.3	0.91	11.22	8.07	0.10	2.71	39.56	4,904	3.46	0.88	8.51	10.17	7.53
NBT Bancorp Inc.	NY	33.71	34.26	23.81	2.56	20.91	18.9	159.9	231.3	1.78	21.08	14.58	0.23	2.80	50.00	8,773	3.44	0.93	8.76	10.37	7.40
Peapack-Gladstone Financial Corporation	NJ	21.15	23.82	16.17	-5.62	2.57	14.6	116.0	117.2	1.45	18.24	18.05	0.05	0.89	13.79	3,774	2.78	0.67	8.22	8.19	8.11
S&T Bancorp, Inc.	PA	31.39	34.00	23.06	8.28	1.85	15.4	130.7	207.7	2.04	24.02	NA	0.19	2.62	37.25	6,718	3.48	1.10	8.77	12.48	NA

ST	10/31/16 Price (\$)	52 Week Trading Range		Price Change		Pr./ LTM	Pr./ BV	Pr./ TBV	LTM	BV (\$)	TBV (\$)	Div. (\$)	Div. Yld. (%)	LTM	TA (\$M)	NIM (%)	ROAA (%)	ROAE (%)	Eq./ TA (%)	Tang.	
		High (\$)	Low (\$)	MTD (%)	YTD (%)	EPS (x)	BV	TBV	EPS (\$)					Div. P/O (%)						CEq./ Tang.A (%)	
Northeast OTC Banks < \$ 1 Billion continued																					
Capital Bank of New Jersey	NJ	14.00	14.00	14.00	0.00	0.00	NA	NA	NA	NA	NA	0.00	1.07	NA	410	3.73	1.04	10.46	9.65	9.65	
Catskill Hudson Bancorp, Inc.	NY	17.00	18.50	14.25	1.49	19.30	NA	NA	NA	NA	NA	0.07	1.60	NA	452	NA	NA	NA	NA	NA	
CBT Financial Corporation	PA	29.00	30.00	25.55	-0.82	11.11	12.2	86.6	108.5	2.38	33.47	26.72	0.30	4.10	51.68	467	3.55	0.77	7.38	10.36	8.45
CCFNB Bancorp, Inc.	PA	39.80	44.00	38.85	-0.50	0.38	12.1	98.8	109.1	3.30	40.28	36.48	0.36	3.60	43.33	680	3.06	1.08	8.40	12.63	11.58
Centric Financial Corporation	PA	7.20	12.00	5.13	-15.79	2.86	NA	127.3	129.1	NA	5.65	5.58	0.00	0.00	NA	421	NA	0.58	6.48	8.49	8.38
Clarion County Community Bank	PA	6.40	7.00	5.78	-1.54	-0.78	14.1	70.6	70.6	0.45	9.06	9.06	0.00	1.59	22.03	138	3.84	0.57	5.19	10.96	10.96
Commercial National Financial Corporation	PA	19.80	24.00	19.50	0.25	-10.00	12.9	95.6	95.6	1.53	20.70	20.70	0.26	5.27	67.97	372	4.03	1.15	7.99	15.90	15.90
Community Bancorp.	VT	14.08	14.50	13.15	1.59	-1.19	13.8	140.3	184.0	1.02	NA	NA	0.16	4.62	62.75	606	NA	0.87	NA	NA	NA
Community Bank of Bergen County, NJ	NJ	12.50	13.00	0.00	4.17	25.00	13.0	80.5	80.5	0.96	15.53	15.53	0.00	0.00	0.00	337	NA	0.56	6.74	8.83	8.83
Community Bankers' Corporation	PA	7.75	8.50	6.60	14.14	0.52	NA	86.7	NA	NA	NA	NA	0.09	5.19	NA	272	NA	NA	NA	NA	NA
Community First Bancorp, Inc.	PA	20.00	20.00	16.80	8.70	16.96	NA	106.5	NA	NA	NA	NA	0.23	2.50	NA	117	NA	NA	NA	NA	NA
Cornerstone Financial Corp.	NJ	1.07	2.00	0.95	-6.14	-29.61	NA	102.8	101.4	NA	1.04	NA	0.00	0.00	NA	254	NA	NA	NA	4.42	NA
Country Bank Holding Company, Inc.	NY	20,000.00	20,000.00	15,500.00	0.00	25.39	NA	NA	NA	NA	NA	NA	250.00	5.59	NA	596	NA	NA	NA	NA	NA
Damariscotta Bankshares, Inc.	ME	8.70	9.10	8.00	0.00	8.75	17.3	64.1	64.1	0.50	13.58	13.58	0.00	4.89	79.31	180	3.35	0.36	3.77	9.55	9.55
Darien Rowayton Bank	CT	0.45	0.45	0.45	0.00	NA	NA	NA	NA	NA	NA	NA	0.00	0.00	NA	603	2.71	-0.75	-9.62	9.18	8.04
Delhi Bank Corp.	NY	27.75	35.35	26.50	0.00	0.00	35.1	156.2	156.2	0.79	17.77	17.77	0.16	2.34	81.92	310	2.54	0.41	4.33	8.75	8.73
Dimeco, Inc.	PA	42.60	42.60	37.00	3.90	10.65	14.3	98.9	99.1	2.97	NA	NA	0.38	3.71	51.18	638	NA	0.79	NA	NA	NA
Elmer Bancorp, Inc.	NJ	16.10	17.50	15.80	-8.00	-2.13	16.7	78.5	78.5	0.96	20.50	20.50	0.00	3.65	65.48	240	4.23	0.46	4.68	9.80	9.80
Embassy Bancorp, Inc.	PA	11.35	11.48	10.15	6.57	4.03	11.9	118.2	118.2	0.95	9.60	9.60	0.13	1.24	13.68	861	3.21	0.86	10.05	8.27	8.27
Empire Bancorp Inc.	NY	9.50	10.00	8.76	2.58	-0.73	25.7	96.2	96.2	0.37	9.88	9.88	0.00	0.00	0.00	768	3.14	0.38	3.94	8.93	8.93
ENB Financial Corp	PA	33.60	34.00	31.50	2.44	3.38	12.5	96.4	96.4	2.68	NA	NA	0.27	3.29	40.30	971	3.02	0.84	7.87	10.30	10.30
Enterprise Bank N.J.	NJ	9.50	10.00	6.20	4.40	35.71	15.8	114.5	114.5	NA	8.30	8.30	0.00	0.00	0.00	201	4.03	0.93	7.48	13.01	13.01
Enterprise Financial Services Group, Inc	PA	6.75	7.50	6.50	3.85	0.00	NA	38.1	NA	NA	NA	NA	0.00	0.00	NA	262	NA	NA	NA	NA	NA
ES Bancshares, Inc.	NY	3.05	3.69	2.62	1.67	12.55	NM	64.5	66.9	0.03	4.73	4.56	0.00	0.00	0.00	247	3.49	0.04	0.49	6.35	6.12
Fidelity D & D Bancorp, Inc.	PA	33.50	38.25	31.00	-7.18	-2.90	11.0	100.8	100.8	3.04	33.24	33.24	0.29	3.21	40.13	770	3.67	1.00	9.54	10.59	10.59
First American International Corp.	NY	16.30	18.50	14.65	0.00	-1.21	37.0	67.3	67.3	0.44	24.23	24.23	0.00	0.00	0.00	729	3.52	0.27	2.55	9.51	7.18
First Colebrook Bancorp, Inc.	NH	19.64	20.85	17.65	-0.46	-3.96	23.1	70.2	NA	0.85	27.96	NA	0.13	2.53	58.82	271	3.24	0.32	3.23	9.06	NA
First Community Financial Corporation	PA	32.75	40.00	31.00	0.00	1.55	NA	105.8	110.2	NA	NA	NA	0.25	3.20	NA	477	NA	NA	NA	NA	NA
First Keystone Corporation	PA	25.50	27.80	23.80	4.08	0.04	16.0	122.7	146.6	1.59	20.78	17.39	0.27	4.32	67.92	983	3.19	0.92	8.09	11.93	10.19
First National Bank of Groton	NY	450.00	450.00	430.00	0.00	2.27	16.0	117.2	117.2	28.12	384.05	384.05	7.00	3.18	54.42	173	4.34	1.03	7.81	13.31	13.31
First Priority Financial Corp.	PA	6.00	6.60	4.78	0.00	0.33	25.0	88.6	95.0	0.24	6.77	6.31	0.00	0.00	0.00	572	3.35	0.43	4.50	8.33	7.25
First Resource Bank	PA	7.34	7.45	6.02	4.86	11.70	13.1	88.4	88.4	0.56	8.30	8.30	0.00	0.00	0.00	222	3.77	0.55	6.54	7.80	7.80
First Suffield Financial, Inc.	CT	7,190.00	7,410.00	7,190.00	-2.97	2.71	NA	127.3	131.8	NA	NA	NA	40.00	2.16	NA	251	NA	NA	NA	NA	NA
Fleetwood Bank Corporation	PA	64.00	65.00	58.30	0.00	6.76	16.1	84.5	84.5	3.99	75.71	75.71	0.50	3.39	49.16	237	3.31	0.50	5.32	9.32	9.32
FNB Bancorp, Inc.	PA	160.00	160.00	146.66	0.31	4.92	NA	138.5	138.5	NA	115.52	115.52	0.84	2.23	NA	926	2.75	0.75	7.90	9.23	9.23
Glenville Bank Holding Company, Inc.	NY	78.00	NA	NA	0.00	0.00	7.1	46.5	46.5	10.97	167.88	167.88	0.45	2.31	14.59	440	3.40	0.50	6.21	7.75	7.75
GNB Financial Services, Inc.	PA	47.00	50.00	38.00	0.00	3.07	NA	NA	NA	NA	NA	NA	0.20	1.90	NA	309	NA	NA	NA	11.92	NA
Gold Coast Bank	NY	10.90	14.00	10.50	3.81	NA	19.3	106.5	106.5	0.57	10.24	10.24	NA	0.00	NA	395	3.31	0.49	5.79	10.19	10.19
Grand Bank Corporation	MA	5,610.00	5,750.00	5,300.00	1.08	1.81	NA	NA	NA	NA	NA	NA	0.00	0.00	NA	324	NA	NA	NA	NA	NA
Greater Hudson Bank	NY	4.40	5.00	3.90	10.00	10.00	12.9	94.8	94.8	0.34	4.64	4.64	0.00	0.00	0.00	460	3.46	0.82	7.30	12.44	12.44
Hamlin Bank and Trust Company	PA	268.50	295.00	256.30	-0.56	4.47	14.7	127.4	127.4	NA	210.69	210.69	5.50	4.09	60.12	441	3.77	1.60	9.78	17.79	17.79
Harvest Community Bank	NJ	0.18	0.35	0.15	20.00	-43.75	NM	7.1	7.1	-2.85	2.53	2.53	0.00	0.00	NM	132	3.01	-2.24	-92.72	2.20	2.20
Highlands Bancorp, Inc.	NJ	8.40	8.85	6.85	0.00	5.00	10.6	82.0	88.3	0.79	10.25	9.51	0.02	0.95	8.86	385	NA	0.49	7.37	4.77	4.44
Honat Bancorp, Inc.	PA	75.00	75.00	67.00	5.26	8.70	15.4	122.6	122.6	4.88	61.20	61.20	0.30	1.69	30.11	613	3.76	1.24	8.44	15.22	15.22
Island Bancorp, Inc.	MA	243.00	243.00	243.00	0.00	21.50	NA	NA	NA	NA	NA	NA	0.00	0.00	NA	187	3.26	0.60	6.22	9.67	8.60
Jeffersonville Bancorp	NY	14.25	15.50	12.94	-3.19	5.56	12.0	98.8	98.8	1.19	14.43	14.43	0.14	4.18	47.06	489	3.81	1.06	8.53	12.50	12.50
Jonestown Bank and Trust Co.	PA	18.75	19.00	16.19	5.04	3.31	10.0	97.0	97.0	1.88	19.34	19.34	0.16	3.86	25.22	492	3.46	0.92	9.86	9.10	9.10
JTNB Bancorp, Inc.	PA	14.25	15.25	12.69	1.79	12.29	14.0	70.3	73.6	1.02	20.28	19.37	0.12	1.57	48.07	190	2.91	0.50	5.46	10.10	9.68
Juniata Valley Financial Corp.	PA	18.49	19.00	17.10	-1.39	4.76	22.5	142.9	157.4	0.82	12.94	11.74	0.22	4.69	107.32	577	3.43	0.70	6.64	10.77	9.88

ST	10/31/16 Price (\$)	52 Week Trading Range		Price Change		Pr./ LTM	Pr./ Pr.	Pr./ Pr.	LTM	BV (\$)	TBV (\$)	Div. (\$)	Div. Yld. (%)	LTM Div. P/O (%)	TA (\$M)	NIM (%)	ROAA (%)	ROAE (%)	Eq./ TA (%)	Tang. CEq./ Tang.A (%)	
		High (\$)	Low (\$)	MTD (%)	YTD (%)	EPS (x)	BV (%)	TBV (%)	EPS (\$)												
Northeast OTC Banks < \$1 Billion continued																					
Katahdin Bankshares Corporation	ME	12.75	12.75	10.88	8.51	13.33	11.2	78.1	87.1	1.14	16.32	14.65	0.10	3.40	35.09	744	3.66	0.67	7.51	8.77	6.75
Kinderhook Bank Corporation	NY	34.90	35.55	25.60	-0.29	1.16	13.7	100.0	100.0	2.55	34.89	34.89	0.22	2.51	34.51	448	NA	0.63	7.30	8.28	5.69
Kish Bancorp, Inc.	PA	44.80	45.75	40.00	-0.44	4.19	NA	101.2	104.4	NA	NA	NA	0.43	3.82	NA	726	NA	NA	NA	NA	NA
Landmark Bancorp, Inc.	PA	12.55	14.55	11.40	4.58	-10.04	20.9	85.9	85.9	0.60	14.61	14.61	0.08	2.67	53.33	307	3.65	0.41	4.47	9.48	8.99
Ledyard Financial Group, Inc.	NH	50.00	50.00	46.00	3.09	2.04	13.2	113.7	113.7	3.80	43.99	43.99	0.48	4.00	50.53	461	3.02	0.90	9.11	9.71	9.71
Liberty Bell Bank	NJ	1.00	1.10	0.76	0.00	17.65	33.3	89.3	89.3	0.03	1.12	1.12	0.00	0.00	0.00	149	3.35	0.13	2.07	6.58	6.58
Lyons Bancorp, Inc.	NY	30.00	35.00	28.00	0.00	-3.23	12.3	153.7	153.7	2.43	NA	NA	0.25	3.31	37.04	928	NA	NA	NA	6.92	6.91
Manor Bank	PA	900.00	NA	NA	0.00	0.00	NM	144.7	144.7	-86.83	622.15	622.15	0.00	0.00	NM	30	3.48	-1.24	-13.15	9.18	9.18
Mars National Bancorp, Inc.	PA	377.00	400.00	377.00	-1.57	-5.75	25.0	85.2	85.2	15.05	442.50	442.50	3.00	3.13	79.73	371	NA	0.33	3.45	9.55	9.55
Mauch Chunk Trust Financial Corp.	PA	12.50	13.25	12.00	0.81	-5.66	14.5	93.8	93.8	0.86	13.32	13.32	0.21	3.46	61.63	388	3.04	0.69	7.50	10.53	10.53
Mercersburg Financial Corporation	PA	23.00	33.00	14.63	-11.54	31.43	18.5	91.3	91.3	1.24	25.20	25.20	0.12	1.78	38.61	172	4.08	0.60	5.13	11.85	11.85
Middlebury National Corporation	VT	30.30	31.00	28.75	0.00	1.00	NA	84.5	86.4	NA	35.84	NA	0.21	2.90	NA	330	NA	NA	NA	9.60	NA
Mifflinburg Bancorp, Inc.	PA	42.20	42.20	42.20	0.00	0.00	10.1	96.7	96.7	4.18	43.65	43.65	0.00	0.00	0.00	398	NA	1.07	9.89	10.82	10.82
MNB Corporation	PA	22.40	27.00	19.50	-0.88	13.42	14.4	83.2	83.2	1.56	26.92	26.92	0.18	3.43	52.56	359	3.15	0.51	5.85	8.49	8.49
Muncy Bank Financial, Inc.	PA	36.69	41.50	29.01	1.92	16.48	12.8	127.2	127.2	2.86	28.84	28.84	0.27	3.18	36.36	384	3.89	1.15	10.50	11.23	11.23
National Bank of Coxsackie	NY	60.56	73.25	60.56	-0.72	-14.65	19.6	110.3	110.3	3.09	54.90	54.90	0.50	1.38	32.37	286	2.87	0.49	6.22	9.10	9.10
Neffs Bancorp, Inc.	PA	305.00	308.00	285.00	3.39	6.05	NA	83.7	83.7	NA	364.34	364.34	0.00	2.37	NA	330	3.22	1.35	7.56	18.02	17.57
New Jersey Community Bank	NJ	3.95	6.60	3.56	5.33	-24.76	NM	68.7	68.7	-1.86	5.75	5.75	0.00	0.00	NM	103	3.14	-3.11	-27.70	10.62	10.62
New Millennium Bank	NJ	3.55	3.70	3.12	0.00	-2.74	NA	NA	NA	NA	NA	NA	0.00	0.00	NA	265	3.18	0.71	9.00	7.66	7.66
New Tripoli Bancorp, Inc.	PA	935.00	985.00	935.00	0.00	-6.50	13.8	118.1	118.1	67.81	791.87	791.87	18.00	3.79	53.09	397	3.53	1.14	9.43	12.88	12.88
Northumberland Bancorp	PA	28.60	30.00	23.77	0.00	12.82	19.9	77.7	77.7	1.44	36.81	36.81	0.17	2.69	45.14	487	2.89	0.40	3.92	10.02	10.03
Northway Financial, Inc.	NH	23.00	23.00	20.23	3.84	6.98	10.7	83.2	95.9	2.14	27.64	24.00	0.32	2.89	29.91	888	NA	0.65	7.84	8.56	7.52
Orange County Bancorp, Inc.	NY	46.10	52.00	46.10	-1.18	-4.46	43.3	93.2	102.3	1.07	49.47	45.07	0.41	3.51	153.96	899	2.99	0.25	2.22	10.77	9.90
Penn Bancshares, Inc.	NJ	42.20	43.00	42.20	0.00	-0.35	NA	NA	NA	NA	NA	NA	0.00	0.00	NA	205	NA	NA	NA	NA	NA
Peoples Limited	PA	63.50	65.00	61.90	0.00	0.40	11.7	121.2	121.2	5.42	52.40	52.40	0.46	2.93	33.54	320	3.65	0.97	11.05	9.00	9.00
Peoples Trust Company of St. Albans	VT	36.25	37.25	26.86	1.83	20.83	19.0	69.8	69.8	1.90	51.94	51.94	0.13	1.51	32.83	257	3.63	0.47	3.89	12.56	12.56
Prime Bank	CT	11.73	15.00	8.35	0.26	38.00	16.7	67.8	67.8	0.70	17.31	17.31	0.00	1.33	28.53	79	2.49	0.51	4.38	12.42	12.42
Putnam County National Bank of Carmel	NY	105.00	NA	NA	0.00	0.00	NA	NA	NA	NA	NA	NA	0.00	0.00	NA	165	2.61	0.46	2.28	22.02	22.02
Riverview Financial Corporation	PA	11.60	13.20	11.00	1.75	-12.12	17.8	84.8	100.6	0.65	13.67	11.54	0.14	4.82	84.62	527	3.86	0.42	5.19	8.38	7.16
SBT Bancorp, Inc.	CT	20.20	22.00	19.05	2.02	-4.49	21.0	88.7	88.7	0.96	22.77	22.77	0.14	2.83	58.33	505	3.03	0.27	4.12	6.14	6.14
Scottdale Bank & Trust Company	PA	452.00	500.00	441.00	0.00	-4.84	29.6	49.0	49.0	15.26	922.45	922.45	0.00	0.00	0.00	261	2.50	0.30	1.72	17.90	17.90
Shore Community Bank	NJ	7.75	8.36	6.23	-4.91	13.67	12.6	80.8	80.8	0.61	9.59	9.59	0.00	0.00	0.00	264	3.60	0.68	6.80	9.87	9.87
Solvay Bank Corporation	NY	34.35	35.10	32.00	5.30	2.76	10.9	95.1	95.1	3.15	36.14	36.14	0.31	3.79	37.86	837	2.79	0.82	9.18	9.05	9.05
Steuben Trust Corporation	NY	32.50	33.00	30.00	0.00	1.56	10.1	101.3	101.4	3.21	32.09	32.04	0.29	3.63	35.51	525	3.57	1.06	10.46	10.10	10.08
Susquehanna Community Financial, Inc.	PA	18.00	25.00	17.35	-5.76	1.41	12.0	123.8	123.8	1.50	NA	NA	0.00	2.41	35.79	397	NA	1.19	NA	NA	NA
Turbotville National Bancorp, Inc.	PA	65.00	75.00	65.00	0.00	-13.33	9.4	72.1	72.1	6.95	90.18	90.18	0.28	0.75	31.10	137	3.16	1.28	8.15	16.03	16.03
UNB Corporation	PA	145.00	150.00	145.00	0.00	-6.45	18.7	60.5	60.5	7.76	239.51	239.51	1.00	1.33	48.99	129	2.62	0.35	3.28	10.61	10.61
VSB Bancorp, Inc.	NY	13.60	14.25	12.11	5.34	3.98	10.5	82.0	82.0	1.30	16.58	16.58	0.07	2.17	20.77	331	3.08	0.70	7.71	9.18	9.18
Woodlands Financial Services Company	PA	25.80	27.97	20.13	10.26	-3.19	11.7	108.2	108.2	2.21	23.86	23.86	0.20	3.60	35.60	378	3.43	0.91	9.68	9.70	9.70
York Traditions Bank	PA	13.00	13.90	11.65	4.00	11.49	9.8	88.9	88.9	1.32	14.63	14.63	0.00	0.00	0.00	398	3.24	0.79	9.42	8.21	8.21
Northeast OTC Banks < \$1 Billion Average					1.21	3.80	16.4	94.0	97.2	2.42	79.72	81.68	3.49	2.12	37.57	418	3.34	0.57	4.47	10.29	10.11
Northeast OTC Thrifts < \$1 Billion																					
Auburn Bancorp, Inc. (MHC)	ME	9.40	9.50	8.00	0.00	17.50	15.0	74.1	74.1	0.63	12.69	12.69	0.00	0.00	0.00	71	3.84	0.45	5.07	9.01	9.01
Delanco Bancorp, Inc.	NJ	11.25	11.51	8.35	0.00	19.68	NM	79.5	79.5	0.01	14.14	14.14	0.00	0.00	0.00	127	3.14	0.01	0.11	10.51	10.51
Gouverneur Bancorp, Inc. (MHC)	NY	14.00	14.95	12.50	0.00	8.95	28.0	104.1	104.1	0.50	13.45	13.45	0.00	2.47	34.00	141	4.30	0.78	3.94	21.14	21.14
Guaranty Bancorp, Inc.	NH	18.50	NA	NA	0.00	0.00	7.0	46.6	46.6	NA	39.68	39.68	0.00	0.00	0.00	447	3.24	0.59	6.66	8.63	8.63
Harleysville Savings Financial Corporation	PA	18.45	21.40	18.00	0.54	-13.79	12.7	103.6	103.6	1.45	17.81	17.81	0.21	4.58	57.93	747	2.77	0.72	8.47	8.79	8.79
Hometown Bancorp, Inc. (MHC)	NY	3.00	3.10	1.36	0.00	100.00	60.0	83.2	87.3	0.05	3.61	3.44	0.00	0.00	0.00	121	NA	0.09	1.22	6.94	6.63
Lincoln Park Bancorp (MHC)	NJ	10.25	10.25	7.41	8.24	38.33	22.3	99.0	99.3	0.46	10.35	10.32	0.00	1.32	13.04	290	NA	0.31	4.36	6.44	6.42

ST	10/31/16 Price (\$)	52 Week Trading Range		Price Change		Pr./ LTM EPS (\$)	Pr./ Pr./ BV (\$)	Pr./ Pr./ TBV (\$)	LTM EPS (\$)	BV (\$)	TBV (\$)	Div. Div. (\$)	Yld. P/O (\$)	LTM Div. P/O (\$)	TA (\$M)	NIM (\$)	ROAA (\$)	ROAE (\$)	Eq./ TA (\$)	Tang. CEq./ Tang.A (\$)	
		High (\$)	Low (\$)	MTD (\$)	YTD (\$)																
		Northeast OTC Thrifts < \$1 Billion continued				2.08	16.80	25.5	95.6	96.9	0.42	14.67	14.67	0.02	0.87	12.30	268	3.35	0.37	3.14	11.47
Meetinghouse Bancorp, Inc.	MA	16.65	19.00	15.25	0.00	7.42	38.3	99.2	99.2	0.44	16.79	16.79	0.00	0.00	0.00	121	NA	0.24	2.76	9.17	9.17
NorthEast Community Bancorp, Inc. (MHC)	NY	7.25	7.70	6.08	3.57	1.83	NA	NA	NA	NA	NA	NA	0.03	1.91	NA	661	NA	0.69	3.96	16.21	16.09
Patriot Federal Bank	NY	6.85	7.19	6.30	-0.29	-4.20	24.5	79.7	80.8	0.28	8.60	8.47	0.00	0.00	0.00	136	3.58	0.31	3.39	9.27	9.15
Pilgrim Bancshares, Inc.	MA	14.10	14.10	12.20	7.63	8.21	38.1	99.4	99.4	0.37	14.19	14.19	0.00	0.00	0.00	230	3.09	0.36	2.38	13.96	13.96
Polonia Bancorp, Inc.	PA	11.05	13.25	10.35	1.84	-4.25	NM	98.9	98.9	-0.14	11.18	11.18	0.00	0.00	NM	284	2.33	-0.16	-1.19	13.17	13.17
Quaint Oak Bancorp, Inc.	PA	11.75	12.10	11.50	0.43	-2.89	15.9	108.8	110.9	0.74	10.80	NA	0.04	1.37	20.95	209	3.52	0.74	7.32	9.69	NA
Seneca-Cayuga Bancorp, Inc. (MHC)	NY	12.45	12.45	10.40	11.16	17.45	NM	114.0	115.5	0.05	10.92	10.78	0.00	0.00	0.00	279	3.67	0.05	0.52	9.06	8.95
Standard Financial Corp.	PA	23.24	26.95	22.70	1.93	-8.86	19.0	82.1	93.3	1.22	28.31	24.92	0.11	1.93	34.02	495	2.85	0.64	4.14	14.78	13.24
Sunnyside Bancorp, Inc.	NY	12.70	12.90	10.87	1.03	10.43	NM	83.2	83.2	-0.08	15.26	15.26	0.00	0.00	NM	97	2.72	-0.05	-0.40	12.48	12.48
Wawel Bank (MHC)	NJ	5.10	5.15	1.76	1.80	84.78	NM	150.6	150.6	-0.16	3.39	3.39	0.00	0.00	NM	73	3.80	-0.48	-4.69	9.94	9.94
William Penn Bancorp, Inc. (MHC)	PA	21.15	23.00	21.00	-0.70	0.71	NA	123.3	123.3	NA	NA	NA	0.00	1.26	NA	316	3.01	0.77	4.23	18.96	18.96
Northeast OTC Thrifts < \$1 Billion Average					2.08	16.80	25.5	95.6	96.9	0.42	14.67	14.67	0.02	0.87	12.30	268	3.35	0.37	3.14	11.47	11.44
Northeast OTC Banks \$1 - \$3 Billion																					
Adirondack Trust Company	NY	1,550.00	1,680.00	1,456.00	0.00	-3.73	NA	NA	NA	NA	NA	NA	25.50	3.26	NA	1,080	2.73	0.56	5.53	10.47	8.77
Bank of Princeton	NJ	29.10	30.00	28.00	0.00	NA	12.5	134.6	134.6	2.32	21.62	21.61	0.00	0.00	NA	1,009	NA	1.14	12.16	10.07	10.07
Bank of Utica	NY	470.00	600.00	438.00	-3.09	-15.32	11.3	61.2	61.2	41.76	767.80	767.80	6.40	2.92	30.65	1,007	1.92	1.07	6.56	19.07	19.07
Cambridge Bancorp	MA	53.25	53.50	45.30	6.39	12.34	13.1	157.7	158.2	4.07	33.76	33.66	0.46	3.68	44.96	1,801	3.24	0.94	12.60	7.56	7.54
Canandaigua National Corporation	NY	138.00	178.00	129.00	0.36	-2.82	11.4	137.0	151.4	12.09	100.75	91.14	0.00	2.88	31.27	2,375	3.58	1.02	12.63	7.97	7.26
Citizens Financial Services, Inc.	PA	50.00	53.50	45.80	-0.79	3.06	13.8	133.2	162.5	3.61	37.53	30.78	0.42	3.33	45.61	1,198	3.75	1.03	9.92	10.48	8.76
FNCB Bancorp, Inc.	PA	5.24	6.90	4.75	4.80	-0.19	2.5	90.2	90.2	2.06	5.81	5.81	0.02	1.60	2.91	1,122	3.14	3.13	40.46	8.61	8.61
Franklin Financial Services Corporation	PA	24.72	24.75	20.11	1.69	5.19	12.3	90.9	98.5	2.01	27.19	25.09	0.21	3.46	39.80	1,107	NA	0.81	7.61	10.56	9.82
QNB Corp.	PA	34.00	35.00	29.20	0.00	7.94	13.4	123.7	123.7	2.54	27.49	27.49	0.30	3.53	46.85	1,072	3.03	0.84	9.25	9.14	9.14
Somerset Trust Holding Company	PA	41.75	44.00	36.55	3.60	-4.02	10.8	105.5	105.5	3.85	39.58	39.57	0.30	2.93	30.10	1,045	3.95	0.92	10.79	9.28	9.28
Northeast OTC Banks \$1 - \$3 Billion Average					1.30	0.27	11.2	114.9	120.6	8.26	117.95	115.88	3.36	2.76	34.02	1,282	3.17	1.15	12.75	10.32	9.83

About Our Firm

Ostrowski & Company, Inc. is a recognized authority in financial, regulatory and strategic matters affecting banks, thrifts and their holding companies. O&Co's in-depth experience and understanding of the banking industry, the regulatory system and the securities markets, uniquely qualify the firm to address the varied needs of banks and thrifts. We provide personalized, independent and objective advisory services. Our clients deal with Managing Directors whose expertise and dedication add value to an assignment and who have a vested interest in the quality of the firm's performance. We accept assignments where we believe that our efforts can be of significant benefit to the client. We seek assignments that require either a very high level of expertise or an innovative solution. Accountability, selectivity and independence enable the firm to deliver professional performance that often exceeds client expectations. Our objective is to provide bank and thrift managements and Boards of Directors with the highest level of expertise and responsiveness, enabling them to make the best decisions for their institutions.

Advisory Services for Banks and Thrifts

Financial

Mergers and Acquisitions

Fairness Opinions

Capital Planning

Profitability Review & Enhancement

Branch Performance Analysis

Valuations:

-Stock Valuations

-Fair Market Value Calculations

-Intangible Impairment Testing

-Fair Value Merger Adjustments

Regulatory

Examination Response

Applications Assistance:

- Branch Transactions

- Mergers and Acquisitions

De Novo Bank Charters

Business Plans

Strategic

Options Assessment

Growth Strategy Development

Competitive/Peer Review

Market Performance & Communication

Organizational/Management Review

Planning and Retreats

OSTROWSKI & COMPANY, INC.

Bank and Thrift Advisors

www.o-and-co.com

New Jersey
908-497-0049

Connecticut
203-699-1445